

Gustav Mahler  
**Symphony no. 3, Adagio**  
*Thematic Synopsis*

**A1** m. 1, part 1  
*violins 1*



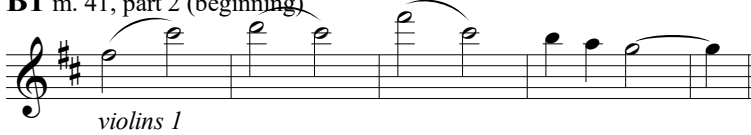
**A2** m. 9, part 1  
*violoncellos*



**A1** m. 21, part 1  
*violins 2, violoncellos*



**B1** m. 41, part 2 (beginning)



**B2** m. 51, part 2  
*oboe 1*



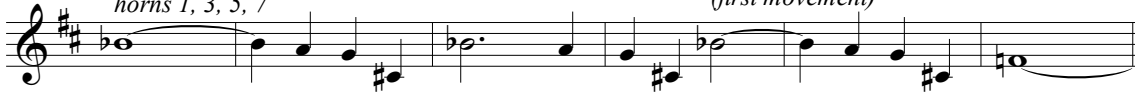
**(B2)** m. 59, part 2  
*violins 2*



**A1** m. 64, part 2 (enclave)  
*horn 1*



**Bk** m. 74, part 2  
*horns 1, 3, 5, 7*



*(first movement)*

**(A2)** m. 92, part 3 (beginning)  
*violoncellos*



**A2** m. 100, part 3  
*violoncellos*



**A1** m. 109, part 3  
*violins 1*



**B1 and B2** m. 125, part 4 (beginning)  
*horns 1, 3*



*clarinets 1, 3*

**Bn** m. 133, part 4

*flute 1, oboe 1*

Musical staff for Bn m. 133, part 4, featuring flute 1 and oboe 1. The staff shows a melodic line with various intervals and dynamics.

**B1 and B2** m. 150, part 4

*violin 2, oboe*

Musical staff for B1 and B2 m. 150, part 4, featuring violin 2 and oboe. The staff shows a melodic line with various intervals and dynamics.

**B2** m. 158, part 4

*violin 1*

Musical staff for B2 m. 158, part 4, featuring violin 1. The staff shows a melodic line with various intervals and dynamics.

**(A2)** m. 169, part 4

*trumpet 1*

Musical staff for (A2) m. 169, part 4, featuring trumpet 1. The staff shows a melodic line with various intervals and dynamics.

**(A1)** m. 175, part 4

*horn 1, 2*

Musical staff for (A1) m. 175, part 4, featuring horns 1 and 2. The staff shows a melodic line with various intervals and dynamics. Includes a measure marked '3' and '(first movement)'.

**(A2)** m. 199, part 4

*violin 1*

Musical staff for (A2) m. 199, part 4, featuring violin 1. The staff shows a melodic line with various intervals and dynamics.

**A2** m. 207, part 4

*viola violin 1*

Musical staff for A2 m. 207, part 4, featuring viola and violin 1. The staff shows a melodic line with various intervals and dynamics. Includes a measure marked '5' and '"5" m. 211'.

**Bk** m. 222, part 4

*trumpets*

Musical staff for Bk m. 222, part 4, featuring trumpets. The staff shows a melodic line with various intervals and dynamics. Includes a measure marked '8' and '(first movement)'.

**x(A2)** m. 246, part 4

*flute 1*

Musical staff for x(A2) m. 246, part 4, featuring flute 1. The staff shows a melodic line with various intervals and dynamics. Includes a measure marked '5' and 'piccolo'.

**A1** m. 253, part 5 (beginning)

*trumpet 1 and trumpet 2*

Musical staff for A1 m. 253, part 5 (beginning), featuring trumpet 1 and trumpet 2. The staff shows a melodic line with various intervals and dynamics. Includes a measure marked '8' and 'trombone 1 (inversion)'.

**A2** m. 277, part 5

*horn 1, 3*

Musical staff for A2 m. 277, part 5, featuring horns 1 and 3. The staff shows a melodic line with various intervals and dynamics. Includes a measure marked '5' and 'trumpets 1, 2, 3'.

**A1** m. 285, part 5

*trumpets and trombones*

Musical staff for A1 m. 285, part 5, featuring trumpets and trombones. The staff shows a melodic line with various intervals and dynamics. Includes a measure marked '5' and '"5" m. 291'.

**(A1)** m. 311, coda (beginning)

*trumpets*

Musical staff for (A1) m. 311, coda (beginning), featuring trumpets. The staff shows a melodic line with various intervals and dynamics. Includes a measure marked '5' and 'trombones'.